

## Ansökan om medlemskap

I am a doctoral candidate and I wish to become a member of the Swedish Association of Graduate Engineers for half normal membership fees. Membership is valid from the first of the month this application is received by the union.

In order to be covered by our advantageous income insurance you must join Akademikernas a-kassa. Read more at [aea.se/about](http://aea.se/about) the benefit.

Personal Reg. No. \_\_\_\_\_ Name \_\_\_\_\_

Address \_\_\_\_\_

Postal code \_\_\_\_\_ Postal codeaddress \_\_\_\_\_

E-mail \_\_\_\_\_ Phone \_\_\_\_\_

I am a doctoral candidate at (university/university college) \_\_\_\_\_

My doctoral studies began \_\_\_\_\_ and will be concluded \_\_\_\_\_

I graduated in \_\_\_\_\_ from university/university college \_\_\_\_\_

Master Degree specialisation? \_\_\_\_\_

Bachelor Degree specialisation? \_\_\_\_\_

Other, which? \_\_\_\_\_

### Insurance from Akademikerförsäkring

As a new member you get an Accident Insurance and a Life Insurance free of extra charge for three months. For more information, please visit [akademikerforsakring.se/Forkopsinformation](http://akademikerforsakring.se/Forkopsinformation).

### Personal data

By applying for membership to the Swedish Association of Graduate Engineers, you agree to this organization processing your personal data in accordance with what is stated in Information in accordance with the Personal Data Act.

## Membership benefits

The Swedish Association of Graduate Engineers is a union and a professional association for graduate engineers. Our full focus is on engineers and your membership will bring financial benefits, contribute to your development and promote sustainable working conditions.

Welcome to the Swedish Association of Graduate Engineers! Why not visit [sverigesingenjorer.se](http://sverigesingenjorer.se) and apply for membership or just fill in the attached form.

### Security Advice

- Income insurance
- Negotiation and legal help
- Private insurance cover

### Societal influence

- Secure jobs for doctoral candidates
- Better quality supervision.
- Attractive doctoral studies that also prepare you for a career outside the academic world
- Increased collaboration between universities and society, nationally and globally

### Half membership fee

Doctoral candidates get reduced rates

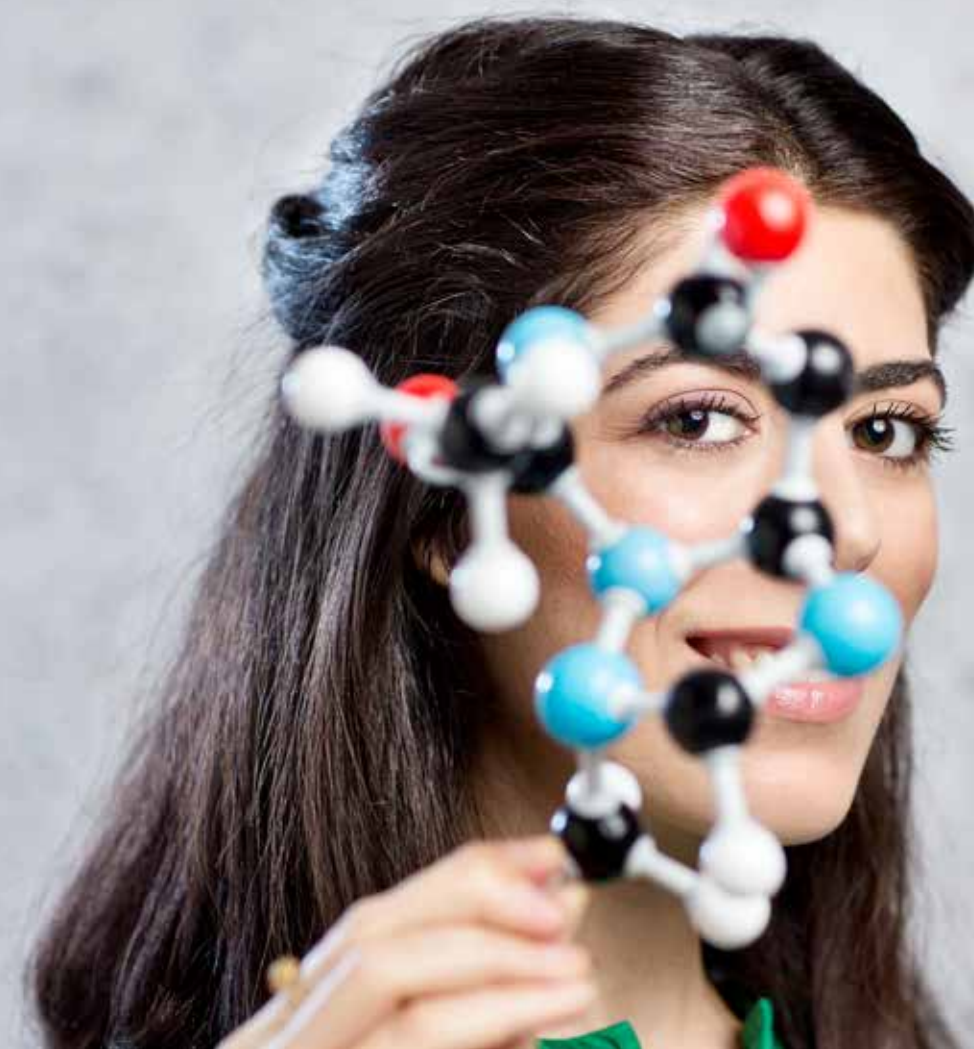
### Career and development

- Ny Teknik magazine
- Specific salary statistics
- Career seminars
- Coaching

SVERIGES INGENJÖRER  
Box 1419, 11184 Stockholm  
Malmskillnadsgatan 48  
08-613 80 00  
[medlem@sverigesingenjorer.se](mailto:medlem@sverigesingenjorer.se)  
[sverigesingenjorer.se](http://sverigesingenjorer.se)



# Engineer and doctoral candidate



# Welcome to the Swedish Association of Graduate Engineers

As an engineer and doctoral candidate, you carry out work that is especially important for society. Because you are developing new knowledge, your tasks are crucial for future generations and continued, sustainable societal development.

The Swedish Association of Graduate Engineers, the only union with a total focus on engineers, is here to support you in this task. As a member, you will become part of Sweden's largest union network for engineers. The Swedish Association of Graduate Engineers will accompany you through your entire working life, regardless of working place, and represent you in a professional manner.

We want you, as doctoral candidates, to feel secure in your workplace and in your doctoral studies, and be assured that your union membership will contribute to your career and development.

Our organization is democratic and based on membership influence. The work we do, we do on behalf of, and together with, our members.

Welcome to the Swedish Association of Graduate Engineers.

# Information in accordance with the Personal Data Act

The Swedish Association of Graduate Engineers is the body responsible for the processing of the personal data you submit in your membership application and subsequent change notifications. This data includes your name, address, personal registration number, telephone number, e-mail, workplace and unemployment insurance fund. This information is necessary for us to be able to look after your interests in matters concerning employment and labour law and to fulfil other commitments which, according to the union constitution and council decisions, rest with us on behalf of you as a member.

## Disclosure

Personal data may, for the same purposes as listed above, also be processed by other unions or associations, companies or government agencies so that we will be able to fulfil contractual agreements or obligations as prescribed by law or ordinances.

This may also apply in the administration of membership benefits such as magazines, insurance, market analyses, statistics and in the evaluation of services and products.

## Collection of data

The information is normally obtained directly from members but may also be obtained from

employers or similar. For addresses, we utilise SPAR, the state personal address register. Thus, you do not need to notify change of address if you move. We will receive information from SPAR about your new registered address about ten days after you register it with the Tax Agency. If you have established what is termed a special address in addition to your registered address, SPAR will notify this instead.

Automatic address updating does not, however, apply if you move abroad so you must notify us of your new address in that case. It is vital to the Swedish Association of Graduate Engineers that the personal data processed is correct. Incorrect information will be corrected as soon as possible. If our members are to get the best possible service, it is essential that they immediately notify all changes that may affect membership status, such as change of employer or similar information. It is also possible to login to your pages, through the Swedish Association of Graduate Engineers website, and make the changes regarding your personal data yourself. By applying for membership of the Swedish Association of Graduate Engineers you consent to us processing your personal data in accordance with what is stated above.

## Sveriges Ingenjörer

Medlemsservice  
Svarspost  
Kundnummer 110568803  
110 07 Stockholm

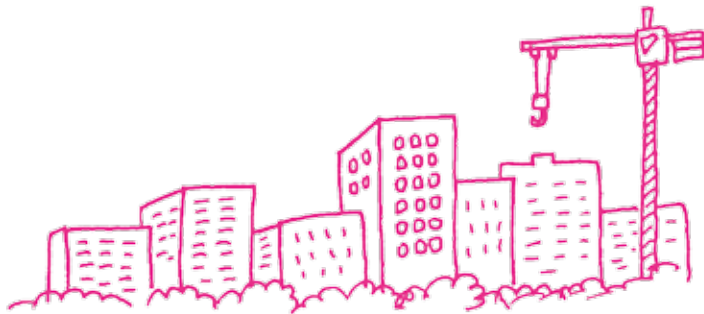
Tear off, fold in the middle, tape together and post. Postage free.

## Influence on society

The Swedish Association of Graduate Engineers work to make the engineer's role visible in society and safeguard the interests of the profession. We are engaged in the development of the university and university college sector and conduct advocacy work to improve working conditions for engineers and doctoral candidates. We do this by participating in debates, meeting with politicians and decision-makers, initiating partnerships and talking to employers. With our advocacy work, we intend to strengthen your preconditions both within the university and on the outside labour market.

Examples of issues:

- Secure employment for doctoral candidates.
- Better quality in supervision. Only people suitable for the job should be supervisors.
- An attractive doctoral studies programme that also prepares candidates for careers outside the university.



## Why should doctoral candidates become members?

As a union, we represent our members in relation to their employers. With our specialist knowledge of engineers' and doctoral candidates' terms and conditions, we intend to achieve good working conditions for you, we ensure that you have the opportunity to develop in your role and are valued as highly as you deserve.

As an association, we work with advocacy and influence on issues that relate to, and strengthen, the engineering corps. We also act for sustainable trade and industry at the individual, operational and societal levels, because it benefits our members.

## Good working conditions

As a doctoral candidate, you are in a special situation. You perform some of the country's research, while you are still in education. The Swedish Association of Graduate Engineers possesses specialist knowledge of your terms and conditions and we intend for you to have good working conditions. Doctoral candidates are entitled to good-quality supervision during their studies as well as a good working environment, physical and psychosocial, both in their role as student and as teacher. Your Study Programme is your mission statement. It is an important document that determines how your research will be carried out.

Becoming a doctoral candidate must be an attractive career path. The Swedish Association of Graduate Engineers believes that doctoral studies are to be considered a job. Salaries and other working conditions should be compared with employment outside the university immediately after graduation with a first degree.

Central collective agreements that apply to you as an engineer and doctoral candidate have been signed between Saco-S and the Swedish Agency for Government Employers. Local agreements are signed between the local Saco-S association (in which the Swedish Association of Graduate Engineers is represented) and a specific university or university college.

## Security in working life

As a doctoral candidate, you should enjoy the same basic security as other engineers employed at the university. Membership in the Swedish Association of Graduate Engineers forms a good basis on which to build a secure, stimulating and well-paid working life.

Call our advisers when you need individual guidance relating to your work situation. If problems do come up at work, you are entitled to support and negotiation assistance from our representatives and legal advisers.

Membership also includes a very good income insurance. However, this requires that you also join the Akademikernas a-kassa which is an unemployment insurance fund. Supplementary insurance is also available to extend your protection against involuntary unemployment.

## Career and development

Doctoral studies form an important part of your professional career. We want you to have the opportunity to develop throughout your professional working life, on your own terms.

As a member, you have access to tools that will strengthen your position, everything from coaching to workshops and engineering-specific salary statistics. These statistics are based on a salary survey that 70 000 of our professional members respond to each year.

Membership also includes the newsletter Högskoleaktuellt, and the Ny Teknik and Ingenjören that keep you up-to-date with news and reports using an engineering focus.

## Near you

The Swedish Association of Graduate Engineers are represented by Saco-S associations at Sweden's universities and university colleges. The Saco-S association takes care of your interests locally. Their elected representatives are experts on working conditions for doctoral candidates and assist you if you need advice or support.

Saco-S is a negotiating body for graduate government employees and doctoral candidates and is the umbrella organisation for almost all academics unions in Saco (the Swedish Confederation of Professional Associations). Saco-S signs collective agreements on behalf of employees and negotiates matters relating to working conditions, organisational change and managerial appointments.